

S.E. 1/4
SECTION 33, T.7N., 2W., S.L.B.&M.

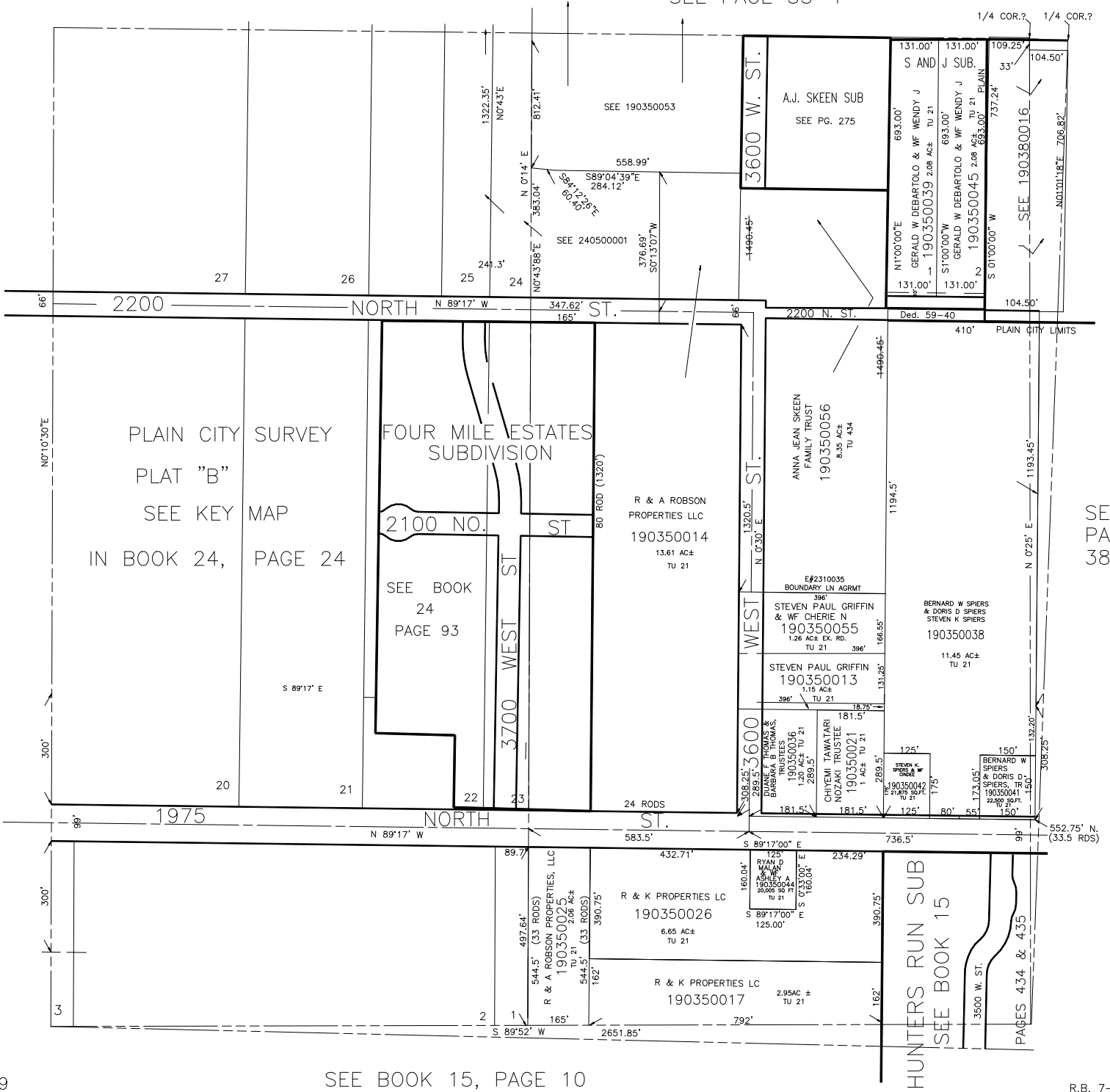
IN PLAIN CITY DISTRICT & PLAIN CITY

TAXING UNIT: 21,434

SCALE 1" = 200'

PREFIX : 19-035

SEE PAGE 35-1



PLAIN CITY SURVEY
PLAT "B"
SEE KEY MAP
IN BOOK 24, PAGE 24

FOUR MILE ESTATES
SUBDIVISION

SEE BOOK
24
PAGE 93

ANNA JEAN SKEEN
FAMILY TRUST
190350056
8.35 AC±
TU 434

R & A ROBSON
PROPERTIES LLC
190350014
13.61 AC±
TU 21

STEVEN PAUL GRIFFIN
& WF CHERIE N
190350055
1.26 AC± EX. RD.
TU 21 396'

STEVEN PAUL GRIFFIN
190350013
1.15 AC±
TU 21 396'

DUANE & THOMAS
BARNES & TRUSTEES
190350036
1.20 AC± TU 21
289.5'

RYAN D
SPERS
190350042
1 AC± TU 21
175'

R & K PROPERTIES LC
190350026
6.65 AC±
TU 21

R & K PROPERTIES LC
190350017
2.95AC ±
TU 21

HUNTERS RUN SUB
SEE BOOK 15

PAGES 434 & 435

SEE
PAGE
38